



THE COLLEGE OF
OPTOMETRISTS

Stage Two

Overarching case scenario 7

AGE AND GENDER Male Aged 22 years

ETHNIC BACKGROUND Afro-Caribbean

OCCUPATION AND HOBBIES Computer programmer (hobby as well as work): driver

PRESENTING SYMPTOMS AND HISTORY occasional blurring of vision using VDU (at 50cms) for long periods: no headaches: no history of eye disease, but both father and paternal grandfather have glaucoma. Wears spectacles for driving and VDU: vision not so good without

GENERAL HEALTH AND MEDICATION good, no medication: maternal grandmother is mature onset diabetic, controlled by oral medication

PRESENT Rx, CENTRATION AND ACUITIES

RE : +1.25/-0.75 x45

LE: +1.25/-0.75 x 135 ocd = 68 RE: 6/5 LE: 6/5

PD/NCD 68/63 at 33 cm

VISION RE: 6/9-2 LE: 6/9-2 **PINHOLE VISION** RE: 6/5-2 LE: 6/5-2

REFRACTION

RE: +1.50/-0.75 x45

LE: +1.50/-0.75 x 135

VA Distance RE: 6/5 LE: 6/5 **Near** RE: N5 LE: N5

ACCOMMODATION RE : 10 LE: 10 binoc: 10.50

BINOCULAR STATUS Cover test

Without Rx Distance and Near No movement seen

With Rx Distance Maddox Rod orthophoria Near Maddox Wing 12Δ XOP

Fixation disparity Mallett unit:

Distance no slip with or without Rx

Near at 33cms and 50cms

With Rx RE 2 base IN

Without Rx no H slip

MOTILITY full , no diplopia

CONVERGENCE NPC with Rx 12 cm, without Rx 8cm

PUPIL REACTIONS direct. consensual and near reflexes present

FUNDUS EXAMINATION see attached

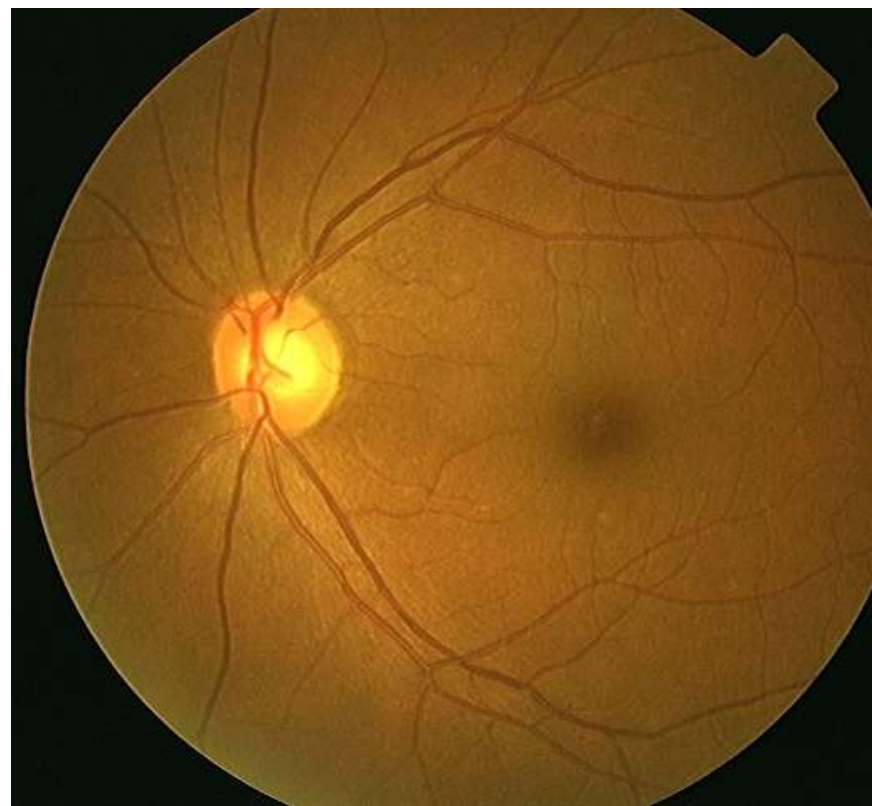
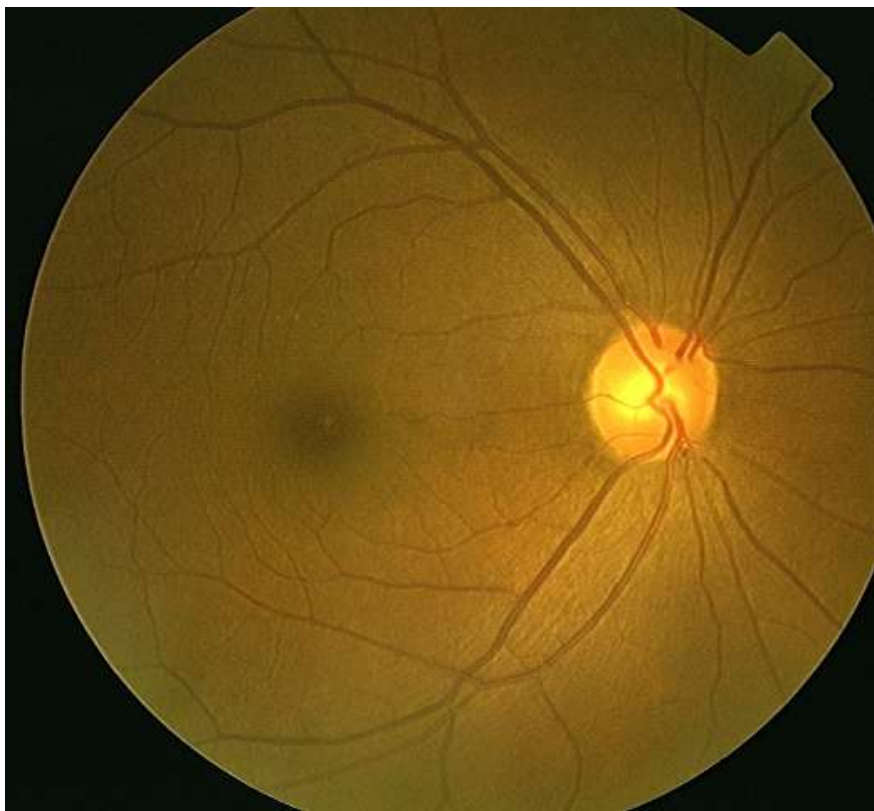
FIELDS see attached

IOP RE: 12 mmHg LE: 12 mmHg AO NCT 3.00pm

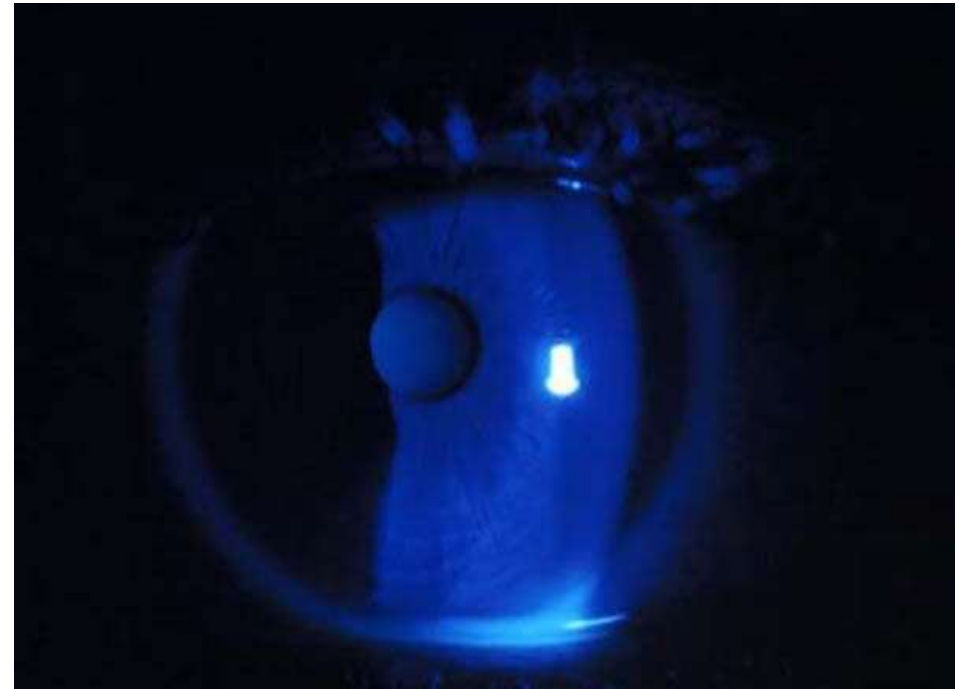
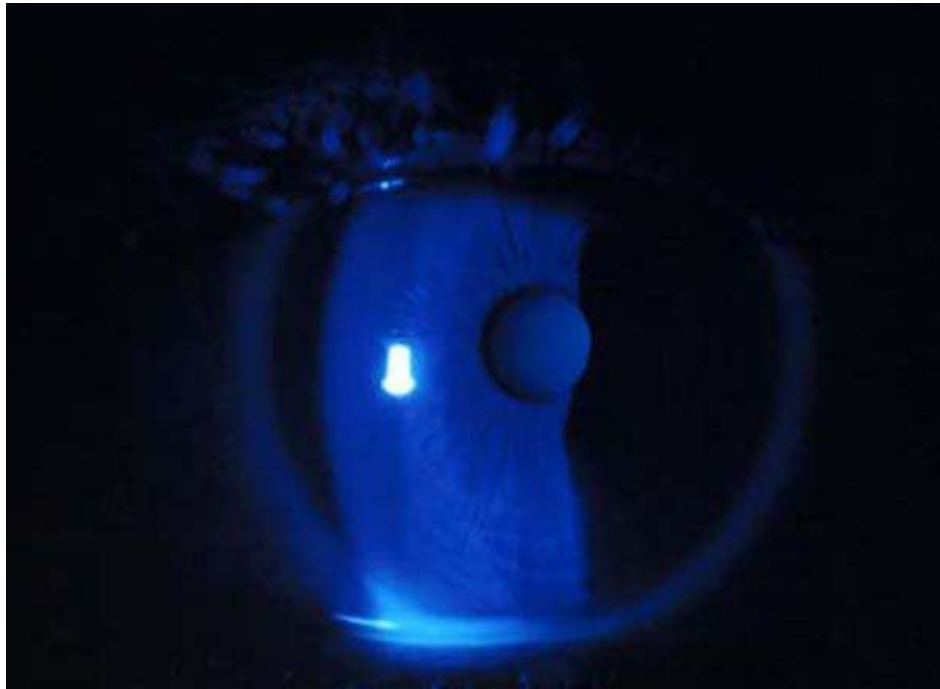
EXTERNAL EYE EXAMINATION see attached

COLOUR VISION see attached

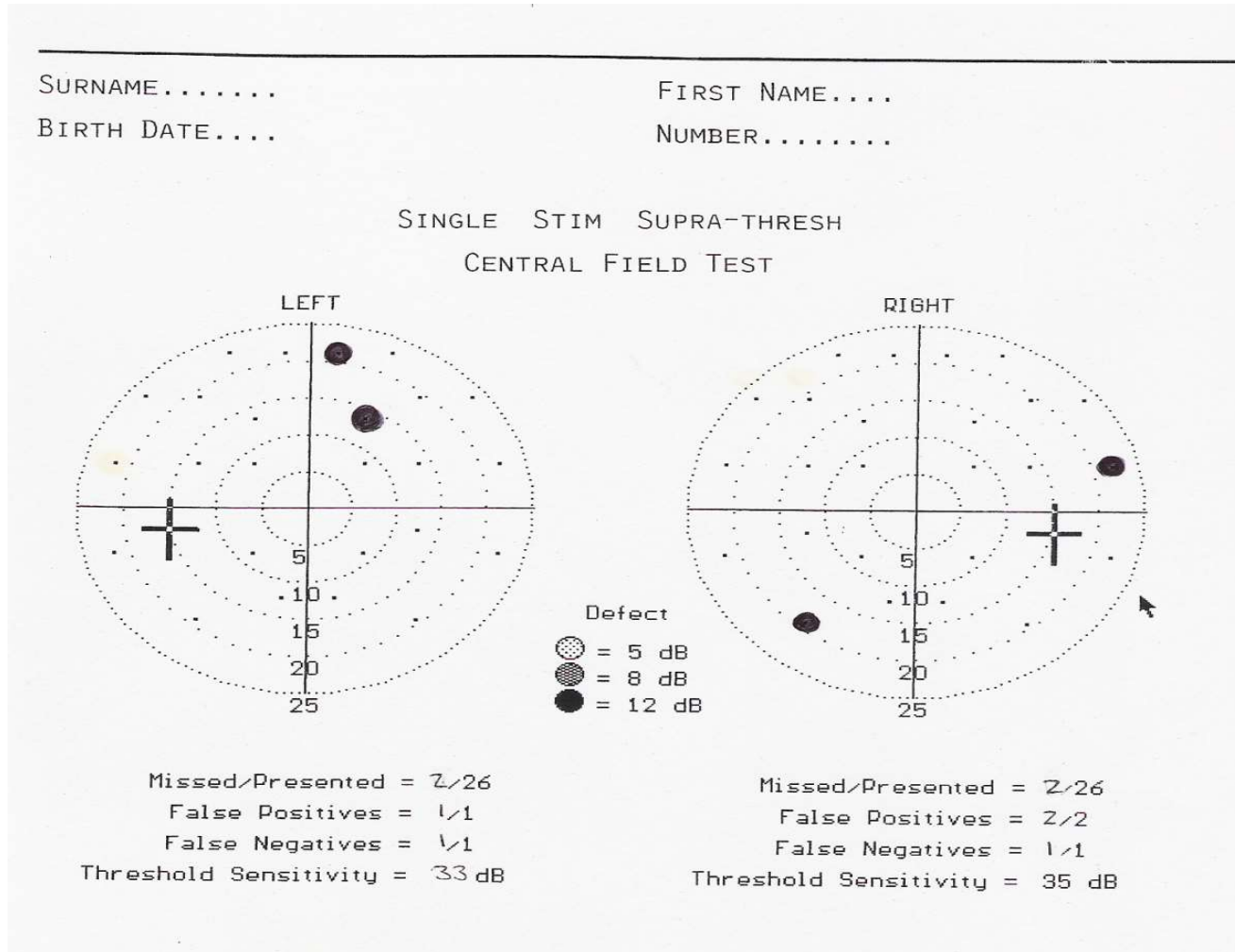
Fundus Image



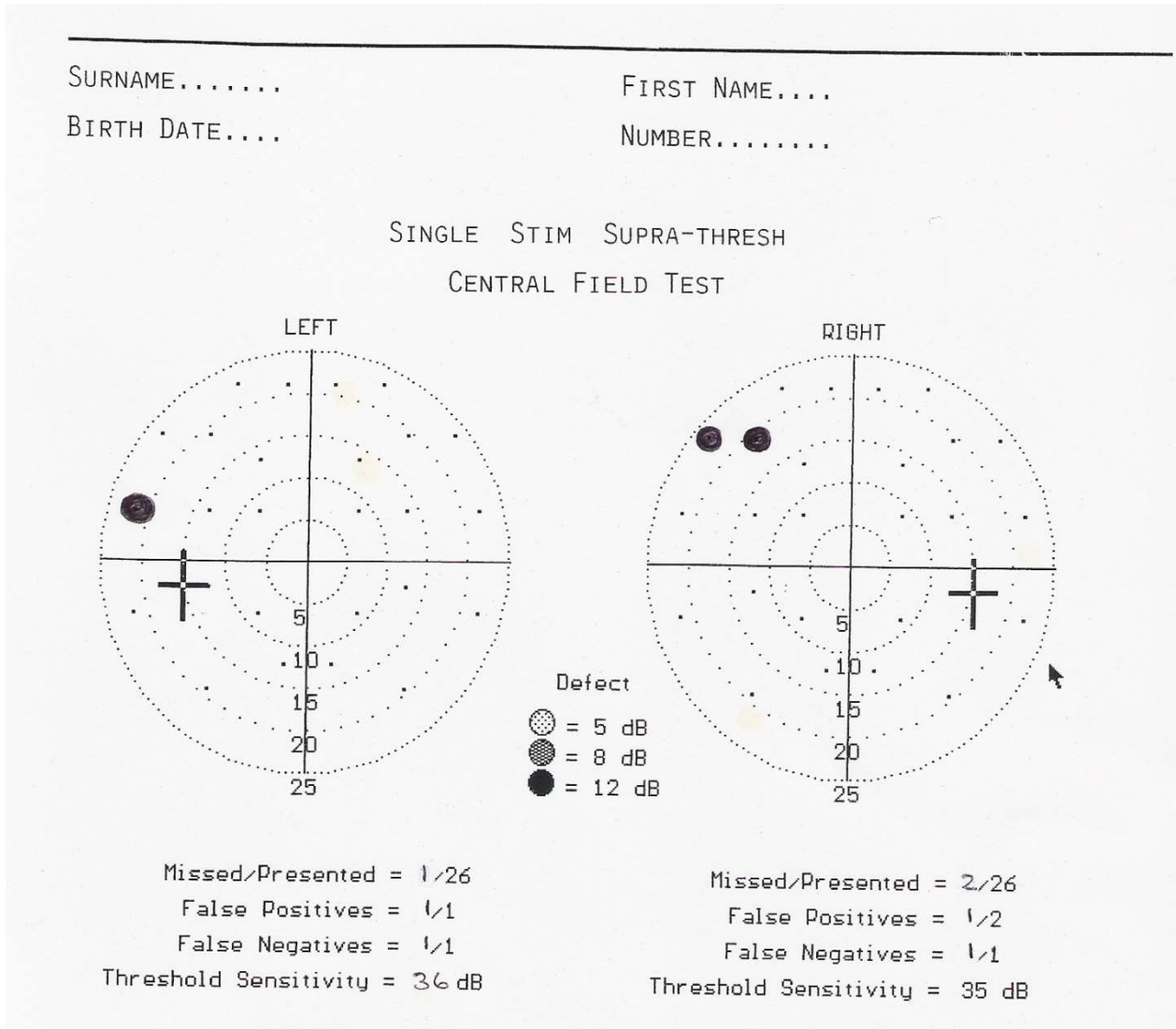
External Eyes – Slit lamp (with fluorescein)



Field RE & LE



Field RE & LE (REPEAT)



Colour Vision (Binocular)

ISHIHARA TEST SCORE SHEET (38-PLATE EDITION, 1979)

NAME:

DATE:

PLATE	SCORE	NORMAL	DEFICIENT	TOTAL CB/ WEAK	ANOPIA PROT ANOMALY		ANOPIA DEUTER ANOMALY	
1	12	12	12	12	12	12	12	12
2	3	8	3	-				
3	6	6	5	-				
4	29	29	70	-				
5	57	57	35	-				
6	8	5	2	-				
7	3	3	5	-				
8	15	15	17	-				
9	24	74	21	-				
10	2	2	-/X					
11	6	6	-/X					
12	97	97	-/X					
13	45	45	-/X					
14	5	5	-/X					
15	7	7	-/X					
16	10	16	-/X					
17	73	73	-/X					
18	-	-	5	-				
19	-	-	2	-				
20	-	-	45	-				
21	-	-	73	-				
22	26	26			6	(2)6	2	2(6)
23	42	42			2	(4)2	4	4(2)
24	35	35			5	(3)5	3	3(5)
25	96	96			6	(9)6	9	9(6)

NOTES: - no numeral read X incorrectly read A(B) A clearer than B